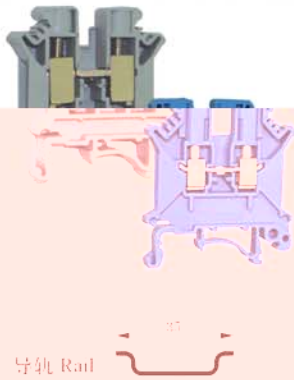


**订购规格 Order specifications:**
**UK 通用型接线端子 UK increased safety terminals**

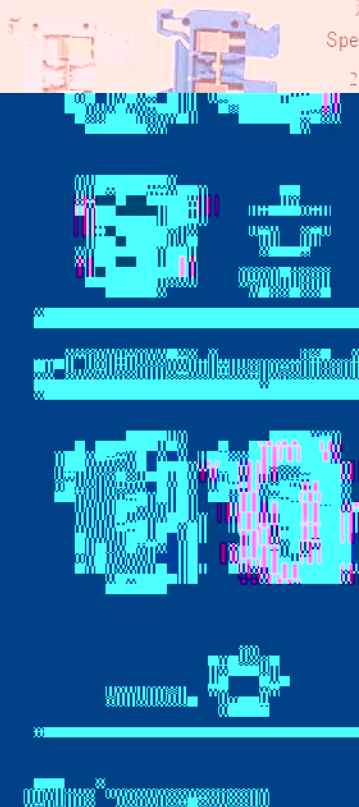
规格 Specification	额定电压 Rated voltage	刚性导线 Rigid conductor	柔性导线 Flexible conductor	订购号 Order No.	
				灰色Grey	蓝色Blue
1.5mm <sup>2</sup>	352V	0.14-1.5mm <sup>2</sup>	0.14-1.5mm <sup>2</sup>	UK/1.5N	UK/1.5N BU
2.5mm <sup>2</sup>	690V	0.2-4mm <sup>2</sup>	0.2-2.5mm <sup>2</sup>	UK/2.5N	UK/2.5N BU
4mm	690V	0.2-6mm	0.2-4mm	UK/5N	UK/5N BU
6mm	690V	0.2-10mm	0.2-6mm	UK/6N	UK/6N BU
10mm	690V	0.5-16mm	0.5-10mm	UK/10N	UK/10N BU
16mm	690V	2.5-25mm	4-16mm	UK/16N	UK/16N BU
35mm	690V	0.75-50mm	0.75-35mm	UK/35N	UK/35N BU
50mm	690V	16-50mm	25-50mm	UKH/50	UKH/50 BU
95mm	880V	25-95mm	35-95mm	UKH/95	UKH/95 BU
150mm	1100V	35-150mm	50-150mm	UKH/150	UKH/150 BU
240mm	1100V	70-240mm	70-240mm	UKH/240	UKH/240 BU


**订购规格 Order specifications:**
**USLKG通用型接地端子 USLKG Common earthing terminal**

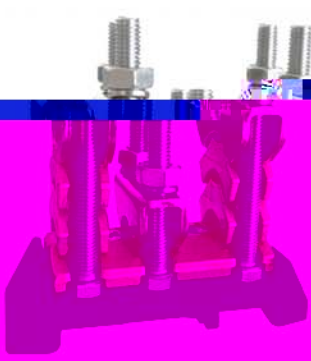
规格 Specification	刚性导线 Rigid conductor	柔性导线 Flexible conductor	订购号 Order No.
1.5mm	0.14-1.5mm	0.14-1.5mm	USLKG1.5N
2.5mm	0.2-4mm	0.2-2.5mm	USLKG3N
4mm	0.2-6mm	0.2-4mm	USLKG5N
6mm	0.2-10mm	0.2-6mm	USLKG6N
10mm	0.5-16mm	0.5-10mm	USLKG10N
16mm	2.5-25mm	4-16mm	USLKG16N
35mm	0.75-50mm	0.75-35mm	USLKG35N
50mm	16-50mm	25-50mm	USLKGH50
95mm	25-95mm	35-95mm	USLKGH95


**订购规格 Order specifications:**
**MBK 小型端子 Terminal**

规格 Specification	额定电压 Rated voltage	刚性导线 Rigid conductor	柔性导线 Flexible conductor	订购号 Order No.	
				灰色Grey	蓝色Blue
2.5mm	275V	0.2-4mm	0.2-2.5mm	MBK/2.5N	MBK/2.5N BU
4mm	275V	0.2-6mm	0.2-4mm	MBK/4N	MBK/4N BU
6mm	275V	0.2-10mm	0.2-6mm	MBK/6N	MBK/6N BU
10mm	275V	0.5-16mm	0.5-10mm	MBK/10N	MBK/10N BU
16mm	275V	2.5-25mm	4-16mm	MBK/16N	MBK/16N BU
35mm	275V	0.75-50mm	0.75-35mm	MBK/35N	MBK/35N BU
50mm	275V	16-50mm	25-50mm	MBKH/50	MBKH/50 BU
95mm	275V	25-95mm	35-95mm	MBKH/95	MBKH/95 BU

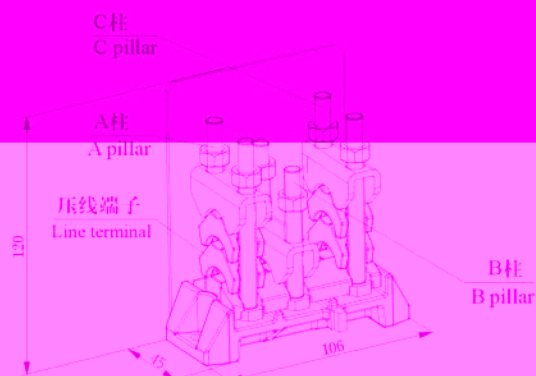
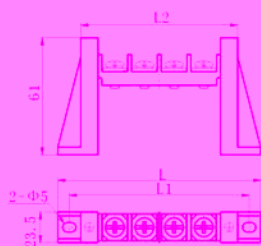
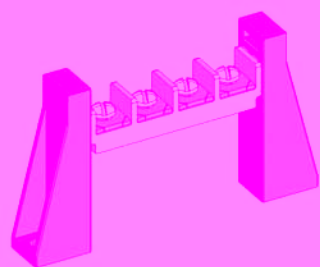


**● 订购规格 Order specifications:**
**大电流接线端子 High current terminal**

	接线柱配置			压线端子 Line terminal			订购号 Order No.
	A柱 A pillar	B柱 B pillar	C柱 C pillar	A柱/数量 A pillar/ quantity	B柱/数量 B pillar/ quantity	C柱/数量 C pillar/ quantity	
	✓		✓	1		1	4037/1
	✓		✓	1		2	4037/2
	✓		✓	2		2	4037/3
	✓	✓	✓	1		1	4037/1B
	✓	✓	✓	1		2	4037/2B
	✓	✓	✓	2		2	4037/3B

额定电压: Max690V AC/DC  
 额定电流: 最大至 630A  
 单芯导线截面: 50mm<sup>2</sup>-185mm<sup>2</sup>  
 多芯导线截面: 50mm<sup>2</sup>-240mm<sup>2</sup>  
 Rated voltage: Max690V AC/DC  
 Rated current: Max 630A  
 Cross section of Single conductor:  
 50mm<sup>2</sup>-185mm<sup>2</sup>  
 Cross section of multiple conductor:  
 50mm<sup>2</sup>-240mm<sup>2</sup>

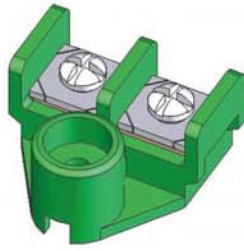
注: > 120mm 导线建议采用带B柱, 作为辅助压线


**C**
**● 订购规格 Order specifications:**
**PE 端子排 Terminal block**


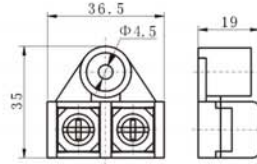
端子数量×截面 Quantity of terminal×Cross section	规格(mm) Specification(mm)			订购号(编码) Order No.( Code )
	L	L1	L2	
4 × (2 × 10 mm <sup>2</sup> )	106	94	82	306 PE/1-04
4 × (2 × 10 mm <sup>2</sup> )	116	106	92	306 PE/3-04
6 × (2 × 10 mm <sup>2</sup> )	142	130	118	306 PE/5-06
8 × (2 × 10 mm <sup>2</sup> )	172	160	148	306 PE/7-08
16 × (2 × 10 mm <sup>2</sup> )	300	288	276	306 PE/8-16

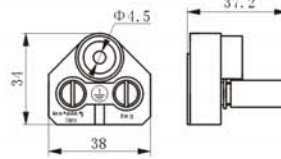
## ● 订购规格 Order specifications:

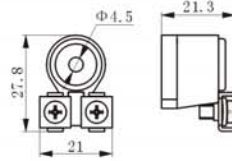
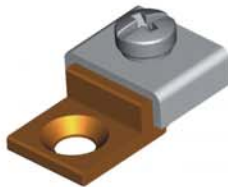
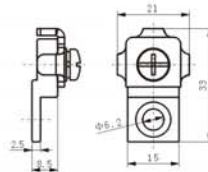
## PE 接线端子 Terminal


**描述**  
 Descriptions

**订购号**  
 Order No.

 10mm<sup>2</sup>接线端子 Terminal

**307 PE**

 4mm<sup>2</sup>接线端子  
 4mm<sup>2</sup> Terminal

**301 PE**

 2.5mm<sup>2</sup>接线端子  
 2.5mm<sup>2</sup> Terminal

**302 PE**

 10mm<sup>2</sup>接线端子  
 10mm<sup>2</sup> Terminal

**308 PE**
**C**

## ● 订购规格 Order specifications:

## PE 端子排 Terminal block


**铜排规格(mm)**  
 Copper bar Size

**铜排长度(mm)**  
 Copper bar Length

**订购号**  
 Order No.

 10 × 3  
 10 × 3  
 20 × 5  
 20 × 5  
 20 × 10  
 20 × 10

 200  
 320  
 200  
 320  
 190  
 310

**8037/3-7**  
**8037/3-8**  
**8037/5-7**  
**8037/5-8**  
**8037/10-7**  
**8037/10-8**

铜排 Copper bar


 8037端子支架  
 Terminal support

**8013压线端子** Line pressing terminal

**K压线端子** Line pressing terminal

**• 订购规格 Order specifications:**
**8013 压线端子 Line pressing terminal**

示意图 Sketch	铜排规格(mm) Copper bar size	订购号 Order No.
<p>4mm<sup>2</sup></p>	10 × 3	<b>8013/4</b> □
<p>16mm<sup>2</sup></p>		<b>8013/16</b> □
<p>35mm<sup>2</sup></p>		<b>8013/35</b> □
	D 黑色 Dark R 红色 Red G 绿色 Green Y 黄色 Yellow B 蓝色 Blue	标记颜色 Colour

**K 压线端子 Line pressing terminal**

示意图 Sketch	铜排规格(mm) Copper bar size	导线截面(mm <sup>2</sup> ) Cross section of conductor	订购号 Order No.
<p>铜排 Copper bar</p> <p>导线 Conductor</p>	20 × 5	35 ~ 70	<b>K20/5</b>
	20 × 5 20 × 10 20 × 15	35 ~ 240 35 ~ 185 35 ~ 95	<b>K20/10</b>
	20 × 15	35 ~ 300	<b>K20/15</b>

**8012 分线排 Connection branch block**

描述 Descriptions	订购号 Order No.
<p>可装 8013/4 压线端子 6 个 The six pieces of 8013/4 Line pressing terminal can be mounted.</p> <p>8012/1 分线排 Connection branch block</p> <p>CZ0513-40A 隔离开关 Isolation switch</p>	<b>8012/1</b>
<p>与 CZ0513-80A 隔离开关连接 It is connected to the CZ0513-80A isolation switch.</p> <p>与 K 压线端子连接 It is connect to the K Line pressing terminal</p> <p>可装 8013/4 压线端子 9 个 可装 8013/16 压线端子 6 个 The nine pieces of 8013/4 Line pressing terminal can be mounted. The six pieces of 8013/16 Line pressing terminal can be mounted.</p>	<b>8012/2</b>