



描述:

三防不锈钢配电箱外壳材料采用不锈钢304或316L，用于恶劣的工作区域，具有高抗腐、防水、防尘特性，可满足化学、石化和海上工业的使用要求。

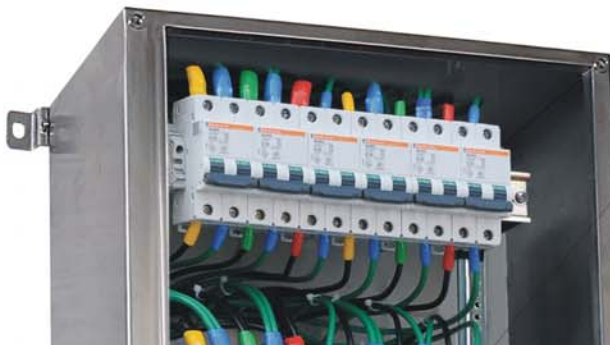
内装高分断小型断路器（漏电保护）和熔断器，适用于额定电压230/400V的电路中，作为单相照明和三相动力系统的配电、检修之用。可根据要求组合成不同规格的配电箱，除标准配置外，可根据用户需求另行设计。

- 模块化设计
- 透明操作窗方便操作
- 面板设有操作机构

Descriptions:

The enclosure of weather-proof stainless steel distribution box is made of 304 or 316L, can be used in hazardous industrial areas, it has characters of high anti-corrosion, water-proof and dust-proof. Therefore, they can satisfy the requirements in chemical, petrochemical and marine industrial areas.

• 示意图 Diagram:



1P小型断路器 (宽 17.5mm), 可装 12 个
1P miniature circuit breaker (width 17.5mm), can house 12

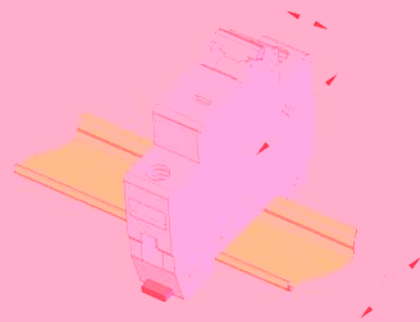
2P小型断路器 (宽 35mm), 可装 6 个
2P miniature circuit breaker (width 35mm), can house 6

3P小型断路器 (宽 52.5mm), 可装 4 个
3P miniature circuit breaker (width 52.5mm), can house 4

4P小型断路器 (宽 70mm), 可装 3 个
4P miniature circuit breaker (width 70mm), can house 3



F



小型断路器
Miniature circuit breaker

● 主要数据 Main technical data:

防腐标志: WF2
防护等级: IP66
使用环境温度: $-40^{\circ}\text{C} < T_a < 55^{\circ}\text{C}$

Corrosion-proof mark: WF2
Degree of protection: IP66
Ambient temperature use: $-40^{\circ}\text{C} < T_a < 55^{\circ}\text{C}$

外壳材料: 304 不锈钢 (表面拉丝处理)
316L 不锈钢 (表面拉丝处理)

Material of enclosure: 304 (On the surface of wire drawing processing)
316L (On the surface of wire drawing processing)

照明动力配电箱

内装元件: C65小型断路器
额定电压: 230V; 50/60Hz
额定电流: 0.5~63A
额定分断能力: 6kA、10kA
脱扣特性: C、D 特性曲线

Illumination power distribution boxes

Built-in component: C65 Miniature circuit breaker
Rated voltage: 230V; 50/60Hz
Rated current: 0.5~63A
Rated of-off capacity: 6kA、10kA
Trip character: C、D Characteristic curve

带漏电保护断路器

额定电流: 6~40A
额定剩余动作电流: 30、300mA
极数: 1P、2P、3P、4P、1P+N、3P+N

With electrical leakage protection circuit breakers

Rated current: 6~40A
Rated remained action current: 30、300mA
Numbers of pole: 1P、2P、3P、4P、1P+N、3P+N

电磁起动配电箱

内装元件: LC1 交流接触器、LR2 热过载继电器
C65/EDZ 塑壳断路器
额定电压: 380/400V; 50/60Hz
总开关额定电流: 40~630A
支回路额定电流: 1~400A

Electromagnetic starting distribution boxes

Built-in component: LC1 AC contractor, LR2 thermal overload relay
C65/EDZ Moulded plastic circuit breaker
Rated voltage: 380/400V; 50/60Hz
Main switch rated voltage: 40~630A
Branch circuit rated voltage: 1~400A

动力检修配电箱

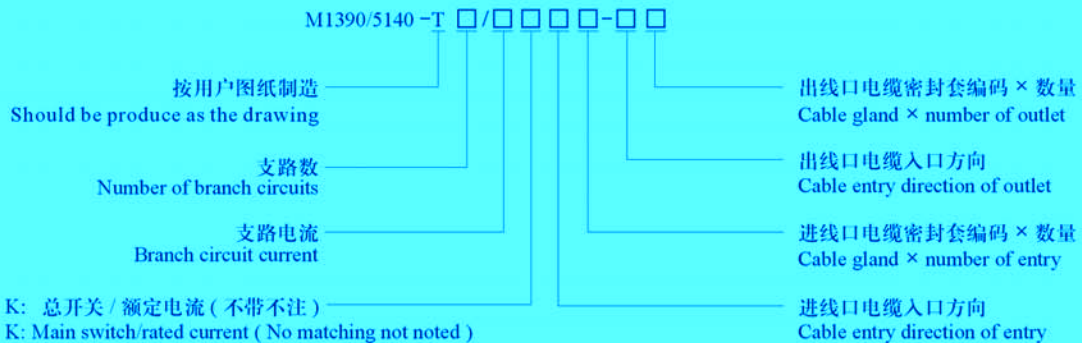
内装元件: EDZ 塑壳断路器
额定电压: 380/400V; 50/60Hz
总开关额定电流: 100~630A
支回路额定电流: 40~100A

Power overhaul distribution boxes

Built-in component: EDZ Moulded plastic circuit breaker
Rated voltage: 380/400V; 50/60Hz
Main switch rated voltage: 100~630A
Branch circuit rated voltage: 40~100A

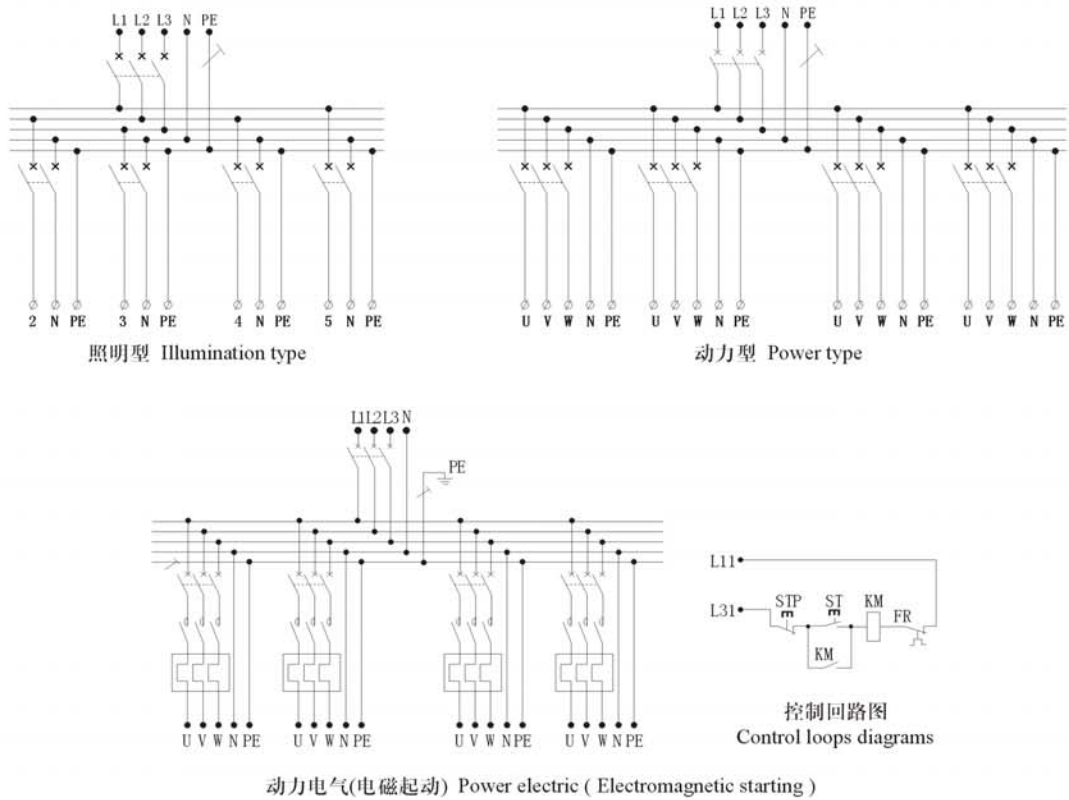
● 订购规格 Order specifications:

型号含义 Model implication:



- 为了便于选型，每个元件和附件都有一组特定的编码，订购时只需填写编码即可。
Each component and accessory have a group specific code for convenient selection. That note the code is OK when ordering.

● 电气原理图 Electrical principal diagram:



● 外形尺寸 Outline dimensions:

